



**Key Parameters**

$V_{RRM}$	= 2600V
$I_{F(AV)}$	= 601A
$I_{FSM}$	= 30000A
$V_{F(TO)}$	= 0.914V
$r_F$	= 0.145mΩ

**Features**

- Full blocking capability over wide temperature range
- Heat transfer through aluminium oxide ceramic isolated metal base plate
- Pressure contacts technology for high reliability
- UL Recognized, file no. E505556


**Applications**

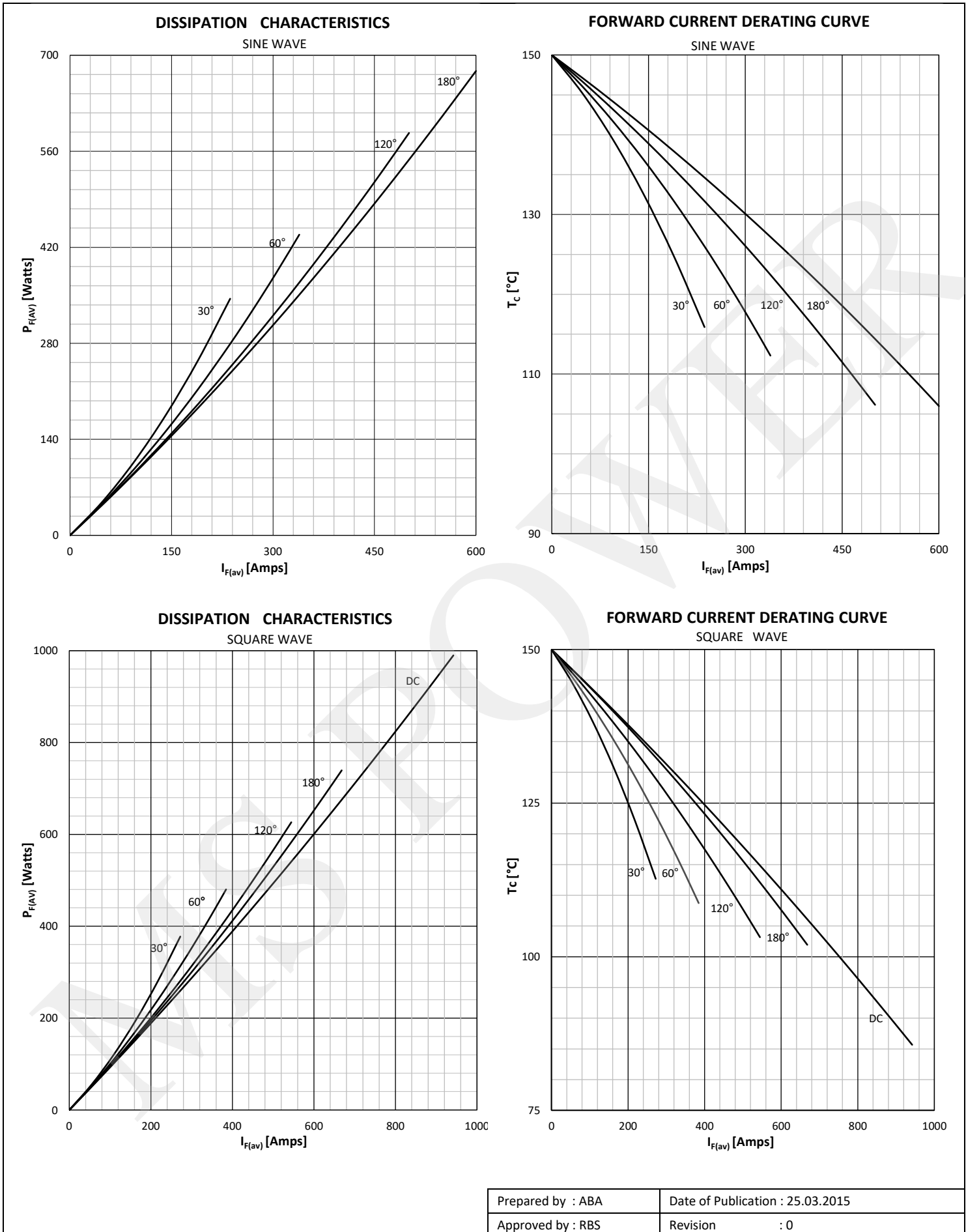
- Power Supplies
- Uncontrolled Rectifiers
- Field supply for DC motors
- Battery Chargers
- UPS

**Ordering Information**

MS	DD	601	K	26
Fixed code	DD- Diode- Diode Module	Current Code	Technology K = Pressure Contact Technology	Voltage Code Code X 100 = $V_{RRM}$
Order Code MS DD601K26 : 2600V $V_{RRM}$ , Diode-Diode Module				

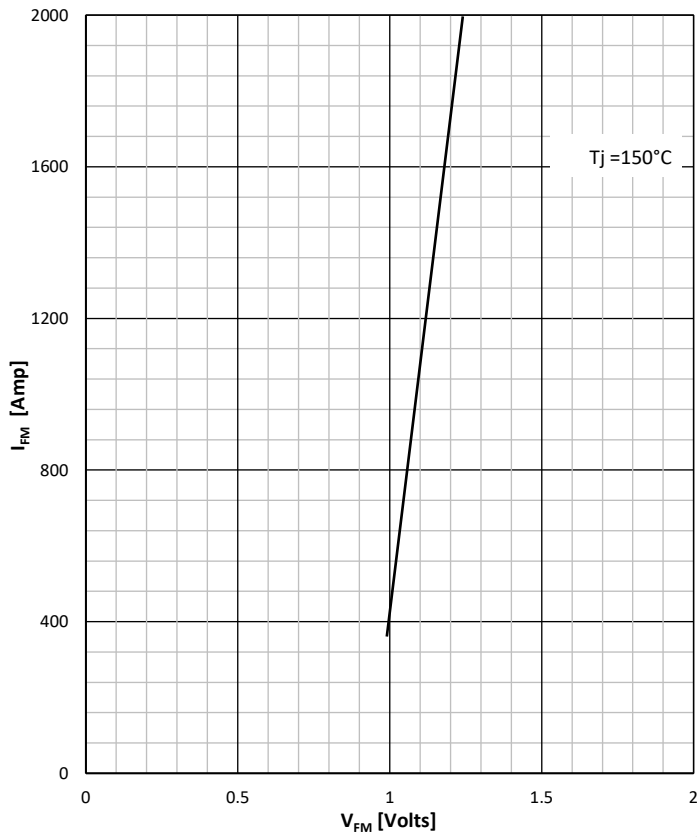
Prepared by : ABA	Date of Publication : 25.03.2015
Approved by : RBS	Revision : 0

Symbol	Characteristic	Conditions	T <sub>j</sub> [°C]	Value	Unit
<b>BLOCKING</b>					
V <sub>RRM</sub>	Repetitive peak reverse voltage		150	800 - 2600	V
V <sub>RSM</sub>	Non-repetitive peak reverse voltage		150	900 - 2700	V
I <sub>RRM</sub>	Repetitive peak reverse current	V = V <sub>RRM</sub>	150	40	mA
<b>CONDUCTING</b>					
I <sub>F(AV)</sub>	Mean forward current	180° sin ,50 Hz, T <sub>c</sub> =106°C 180° sin ,50 Hz, T <sub>c</sub> =100°C		601 660	A
I <sub>FRMS</sub>	RMS current	T <sub>c</sub> =106°C		942	A
I <sub>FSM</sub>	Surge forward current	Sine wave, 10 ms Without reverse voltage	25	30000	A
			150	29000	A
I <sup>2</sup> t	I <sup>2</sup> t	Sine wave, 10 ms Without reverse voltage	25	4500 x 10 <sup>3</sup>	A <sup>2</sup> s
			150	4205 x 10 <sup>3</sup>	A <sup>2</sup> s
V <sub>F</sub>	Forward voltage	On-state current = 1500A	25	1.18	V
V <sub>F(TO)</sub>	Threshold voltage		150	0.914	V
r <sub>F</sub>	Forward slope resistance		150	0.145	mΩ
<b>MOUNTING</b>					
R <sub>th(j-c)</sub>	Thermal impedance, sin 180°	Junction to case, per arm per module		0.0650 0.0325	°C/W
R <sub>th(c-h)</sub>	Thermal impedance	Case to heatsink, per arm per module		0.02 0.01	°C/W
T <sub>j</sub>	Max. junction temperature			150	°C
T <sub>stg</sub>	Storage temperature			-40 .... 150	°C
V <sub>ISOL</sub>	Insulation test voltage, RMS	F=50Hz, 1min		3.0	KV
M1	Mounting torque			6 ± 15%	Nm
M2	Terminal connection torque			12 ± 10%	Nm
W	Weight (Approx.)			1480	gm
	File No.			E505556	
			Prepared by : ABA	Date of Publication : 25.03.2015	
			Approved by : RBS	Revision : 0	

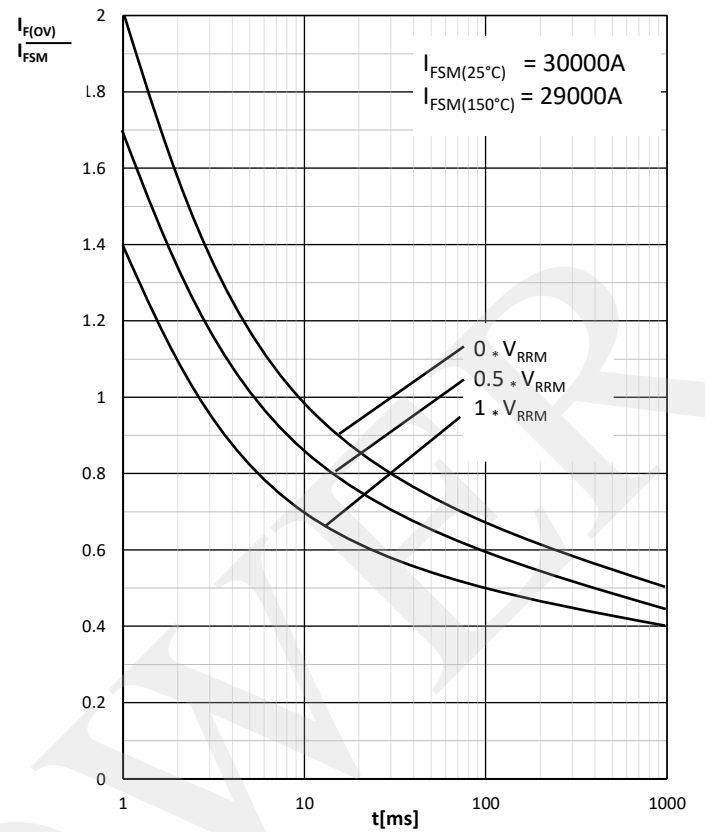


Prepared by : ABA	Date of Publication : 25.03.2015
Approved by : RBS	Revision : 0

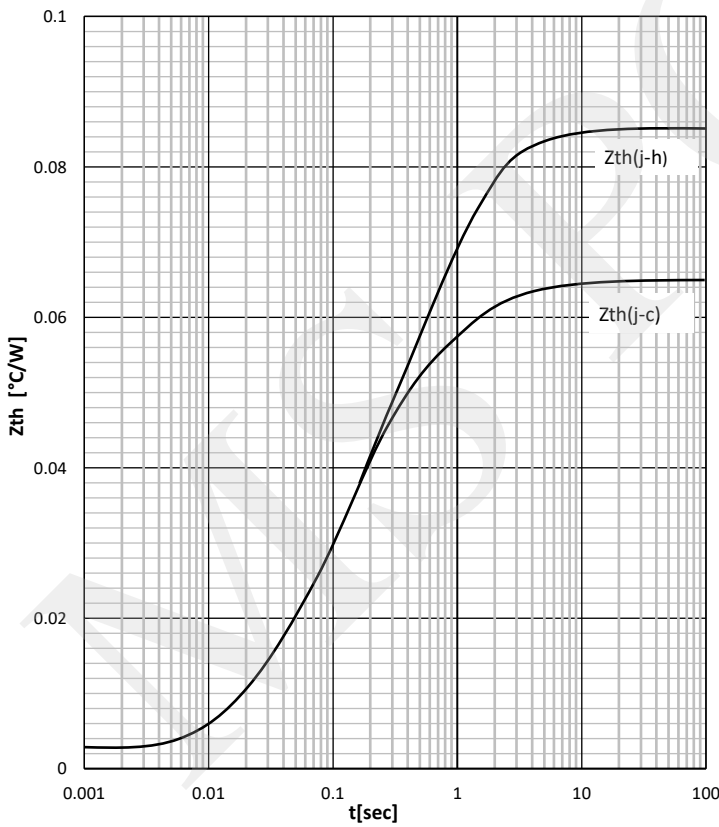
FORWARD CHARACTERISTIC



SURGE CHARACTERISTICS



TRANSIENT THERMAL IMPEDANCE



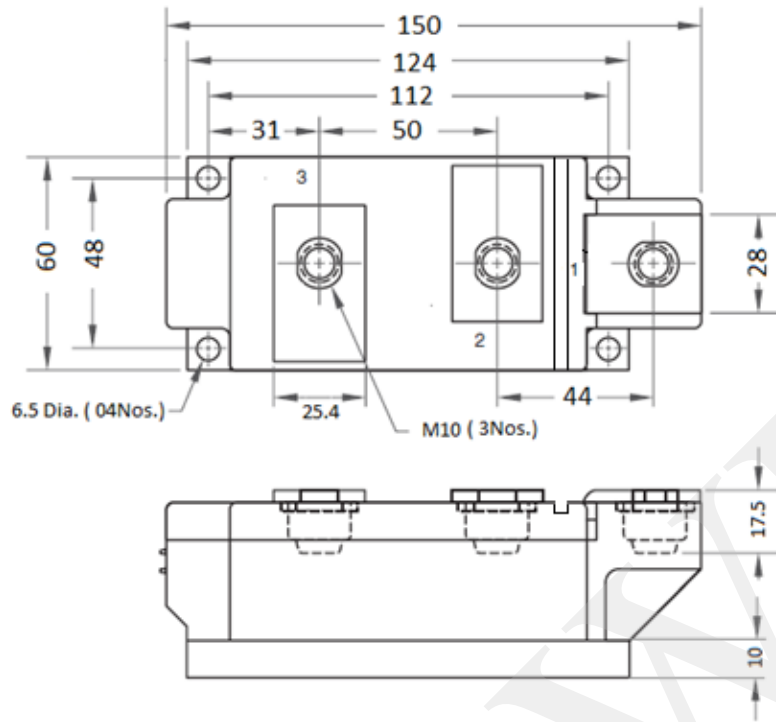
Prepared by : ABA

Date of Publication : 25.03.2015

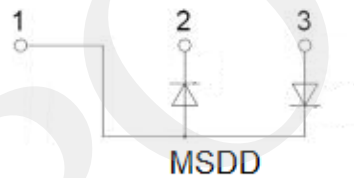
Approved by : RBS

Revision : 0

## Outline



Note : All dimensions are in mm.  
Tolerance :  $\pm 0.5\text{mm}$



### MS Power GmbH

Mergenthalerallee 79-81  
65760 Eschborn, Germany  
Web: [www.mspowergroup.com](http://www.mspowergroup.com)  
Mail: [info@mspowergroup.de](mailto:info@mspowergroup.de)

#### Sales & Enquiry:

[sales@mspowergroup.de](mailto:sales@mspowergroup.de)

#### Technical Support:

[solution@mspowergroup.de](mailto:solution@mspowergroup.de)

#### After sales Service:

[service@mspowergroup.de](mailto:service@mspowergroup.de)

Phone: +49 (0) 6196/7768 666

Fax: +49 (0) 6196/7757 888



Prepared by : ABA

Date of Publication : 25.03.2015

Approved by : RBS

Revision : 0

**Terms & Conditions of usage :**

The data contained in this product datasheet is exclusively intended for technically trained staff. You and your technical departments will have to evaluate the suitability of the product for the intended application and the completeness of the product data with respect to such application. This product datasheet is describing the characteristics of this product for which a warranty is granted. Any such warranty is granted exclusively pursuant to the terms and conditions of the supply agreement. There will be no guarantee of any kind for the product and its characteristics. The information in the valid application- and assembly notes of the device must be considered.

Should you require product information in excess of the data given in this product datasheet or which concerns the specific application of our product, please contact the sales office, which is responsible for you (see [www.mspowergroup.com](http://www.mspowergroup.com)). For those that are specifically interested we may provide application notes.

Due to technical requirements our product may contain dangerous substances. For information on the types in question please contact the sales office, which is responsible for you.

Should you intend to use the Product in aviation applications, in health or life endangering or life support applications, please notify. Please note, that for any such applications we urgently recommend

- to perform joint Risk and Quality Assessments;
- the conclusion of Quality Agreements;
- to establish joint measures of an ongoing product survey, and that we may make delivery dependent on the realization of any such measures.

If and to the extent necessary, please forward equivalent notices to your customers.

Changes of this product datasheet are reserved.

Prepared by : ABA	Date of Publication : 25.03.2015
Approved by : RBS	Revision : 0