

Key Parameters

V_{RRM}	= 1600V
$I_{F(AV)}$	= 400A
I_{FSM}	= 7400A
$V_{F(TO)}$	= 0.75V
r_F	= 0.35mΩ

Features

- Full blocking capability over wide temperature range
- Hermetic metal case with glass insulator
- Flat base

Applications

- Power Supplies
- Uncontrolled Rectifiers
- Battery Chargers

Ordering Information

MS D	400	N	XX	F	B
Rectifier Diode	Current code	Polarity R= Base Anode N= Base Cathode	Voltage Code Code X 100 = V_{RRM}	F = Flat Base	Technology B = Solder Bond Technology

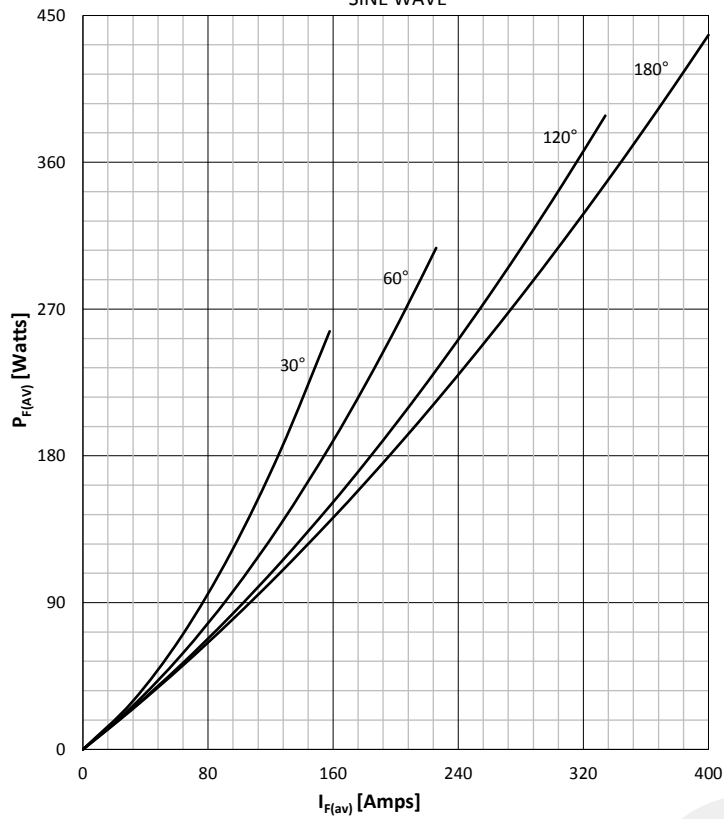
Order Code MS D400N16FB : 1600V V_{RRM} , Flat Base, Diode with base Cathode

Prepared by : ABA	Date of Publication : 25.03.2015
Approved by : RBS	Revision : 0

Symbol	Characteristic	Conditions	T _j [°C]	Value	Unit
BLOCKING					
V _{RRM}	Repetitive peak reverse voltage		180	200 - 1600	V
V _{RSM}	Non-repetitive peak reverse voltage		180	300 - 1700	V
I _{RRM}	Repetitive peak reverse current	V = V _{RRM}	180	50	mA
CONDUCTING					
I _{F(AV)}	Mean forward current	180° sin ,50 Hz, T _c =125°C		400	A
I _{FRMS}	RMS current			628	A
I _{FSM}	Surge forward current	Sine wave, 10 ms Without reverse voltage	25	7400	A
			180	7000	A
I ² t	I ² t	Sine wave, 10 ms Without reverse voltage	25	274 x 10 ³	A ² s
			180	245 x 10 ³	A ² s
V _F	Forward voltage	On-state current = 1050A	180	1.12	V
V _{F(TO)}	Threshold voltage		180	0.75	V
r _F	Forward slope resistance		180	0.35	mΩ
MOUNTING					
R _{th(j-c)}	Thermal impedance, sin 180°	Junction to case		0.125	°C/W
R _{th(c-h)}	Thermal impedance	Case to heatsink		0.02	°C/W
T _j	Max. junction temperature			180	°C
T _{stg}	Storage temperature			-40 180	°C
M	Mounting torque			20	NM
W	Weight (Approx.)			350	gm
			Prepared by : ABA	Date of Publication : 25.03.2015	
			Approved by : RBS	Revision : 0	

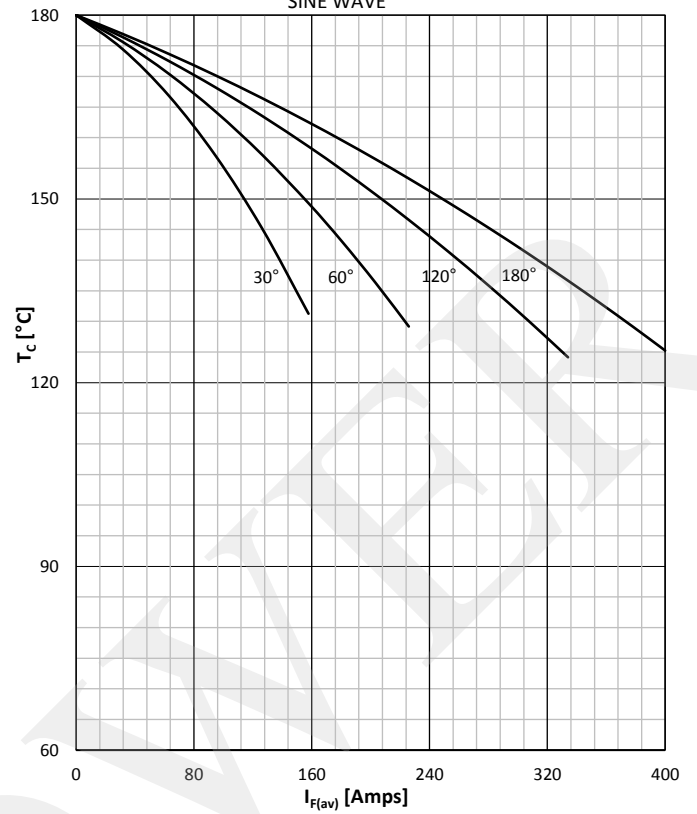
DISSIPATION CHARACTERISTICS

SINE WAVE



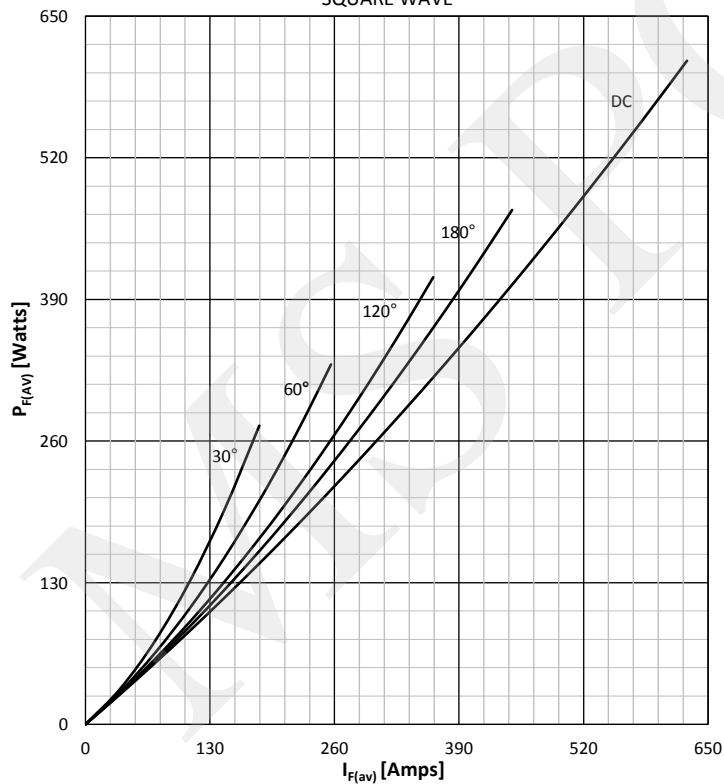
FORWARD CURRENT DERATING CURVE

SINE WAVE



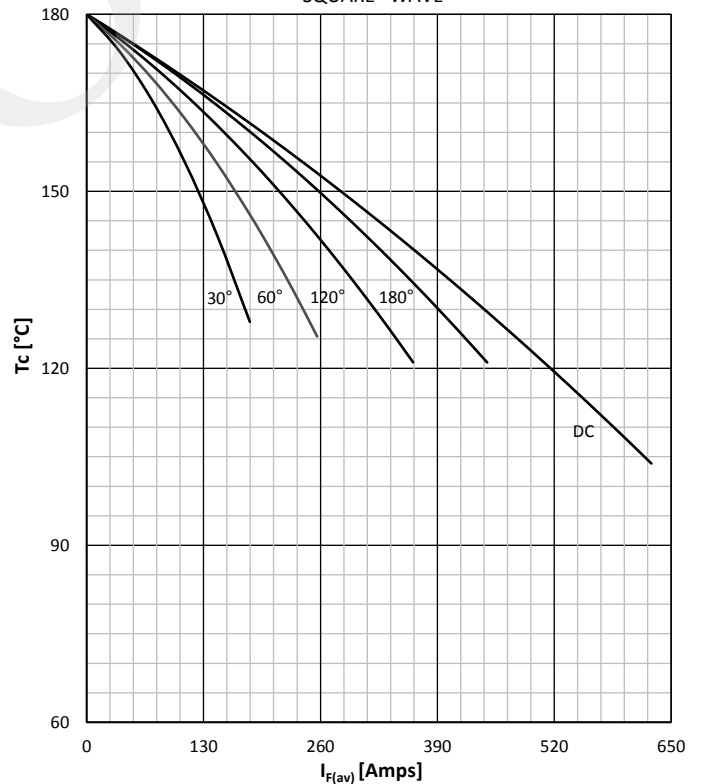
DISSIPATION CHARACTERISTICS

SQUARE WAVE



FORWARD CURRENT DERATING CURVE

SQUARE WAVE



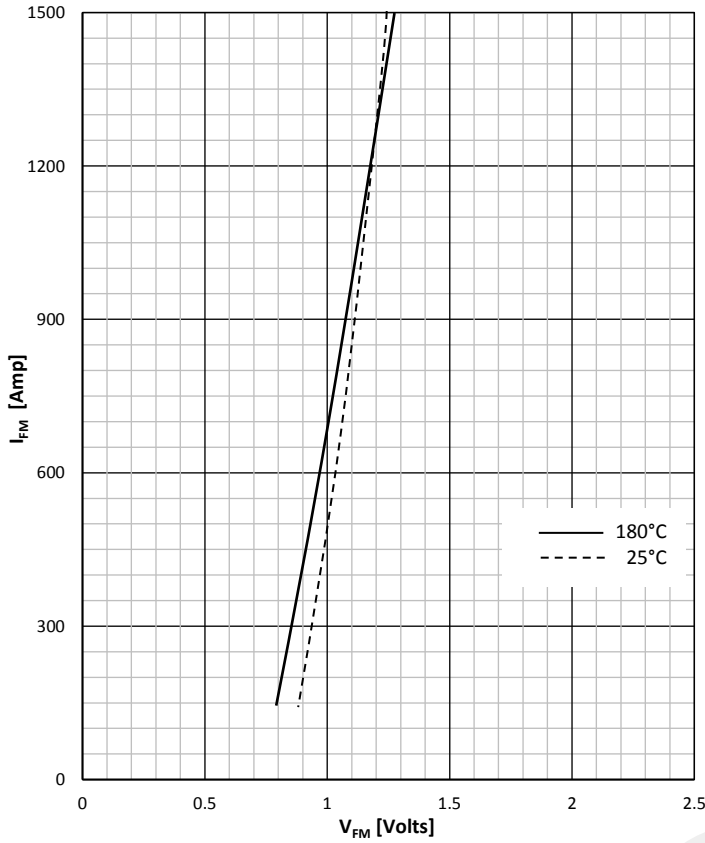
Prepared by : ABA

Date of Publication : 25.03.2015

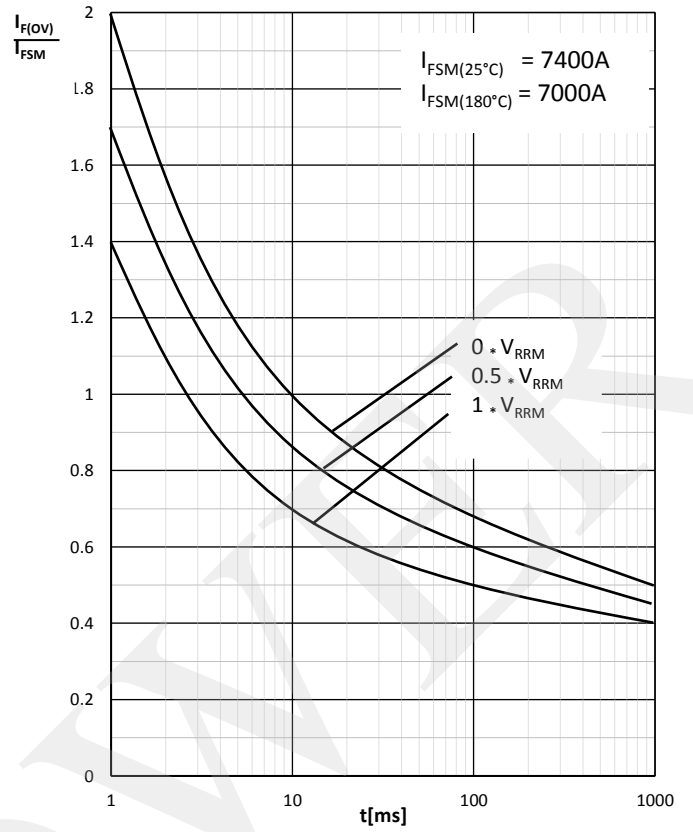
Approved by : RBS

Revision : 0

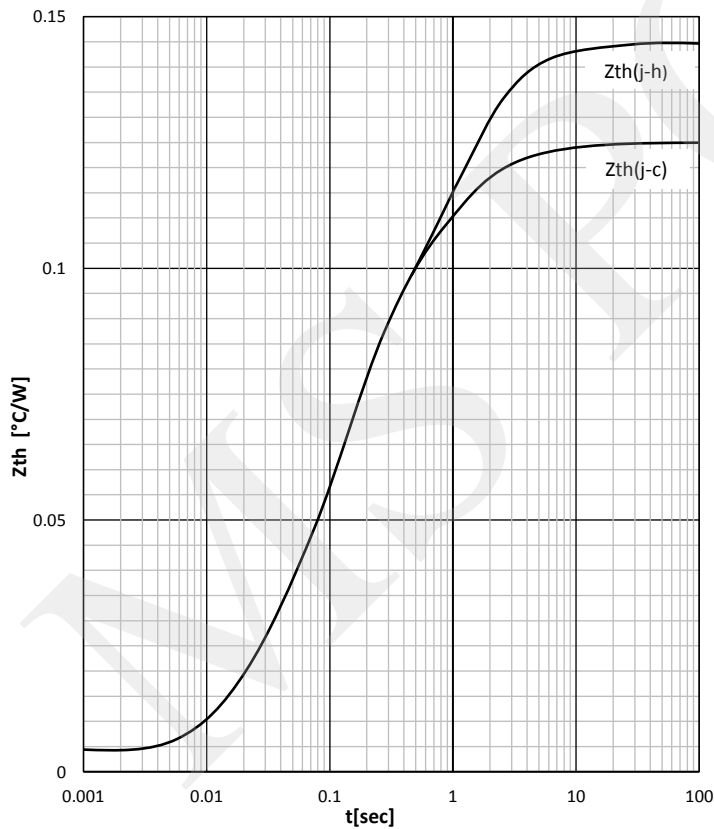
FORWARD CHARACTERISTIC



SURGE CHARACTERISTICS



TRANSIENT THERMAL IMPEDANCE



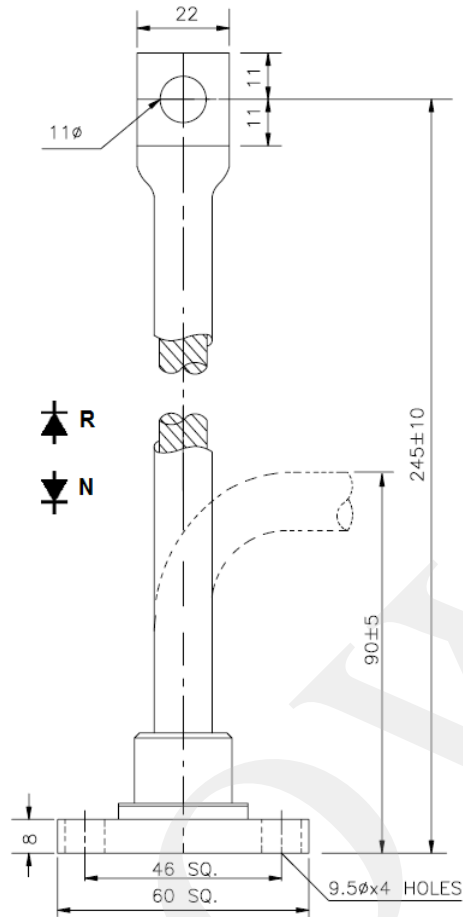
Prepared by : ABA

Date of Publication : 25.03.2015

Approved by : RBS

Revision : 0

Outline



MS Power GmbH

Mergenthalerallee 79-81
65760 Eschborn, Germany
Web: www.mspowergroup.com
Mail: info@mspowergroup.de

Sales & Enquiry:

sales@mspowergroup.de

Technical Support:

solution@mspowergroup.de

After sales Service:

service@mspowergroup.de

Phone: +49 (0) 6196/7768 666

Fax: +49 (0) 6196/7757 888



Prepared by : ABA

Date of Publication : 25.03.2015

Approved by : RBS

Revision : 0

Terms & Conditions of usage :

The data contained in this product datasheet is exclusively Intended for technically trained staff. You and your technical departments will have to evaluate the suitability of the product for the intended application and the completeness of the product data with respect to such application. This product datasheet is describing the characteristics of this product for which a warranty is granted. Any such warranty is granted exclusively pursuant the terms and conditions of the supply agreement. There will be no guarantee of any kind for the product and its characteristics. The information in the valid application-and assembly notes of the device must be considered.

Should you require product information in excess of the data given in this product datasheet or which concerns the specific application of our product, please contact the sales office, which is responsible for you (see www.mspowergroup.com). For those that are specifically interested we may provide application notes.

Due to technical requirements our product may contain dangerous substances. For information on the types in question please contact the sales office, which is responsible for you.

Should you intend to use the Product in aviation applications, in health or live endangering or life support applications, please notify. Please note, that for any such applications we urgently recommend

- to perform joint Risk and Quality Assessments;
- the conclusion of Quality Agreements;
- to establish joint measures of an ongoing product survey, and that we may make delivery depended on the realization of any such measures.

If and to the extent necessary, please forward equivalent notices to your customers.

Changes of this product datasheet are reserved.

Prepared by : ABA	Date of Publication : 25.03.2015
Approved by : RBS	Revision : 0