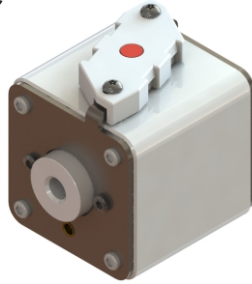


Square Body Flush End Contact Size 03

1000V(IEC) 315A-1400A

► Product picture



► Specifications

Description: Square body DIN 43 620 blade style high speed fuses.

Ratings:

Rated Volts: —1000V a.c(IEC)

Rated Amps: —315A-1400A

Breaking Capacity: —150kA RMS Sym

Agency Information: CE, Designed and tested to IEC 60269: Part 4, UL Recognized.

► Features and Benefits

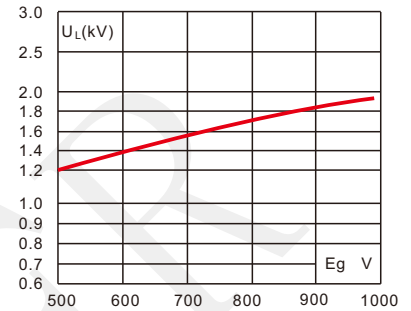
- Excellent current limiting
- Low arc voltage and low energy let-through(I^2t)
- Low watts loss
- Superior cycling ability

► Typical Applications

- Power converters/rectifiers
- Reduced voltage starters

► Arc Voltage

This curve gives the peak arc voltage, U_L , which may appear across the fuse during its operation as a function of the applied working voltage E_g , (rms) at a power factor of 15%.

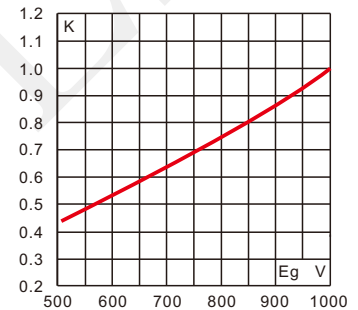


► Electrical

Characteristics

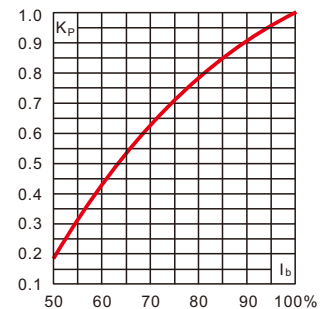
Total clearing I^2t

The total clearing I^2t at rated voltage and at power factor of 15% are given in the electrical characteristics. For other voltages, the clearing I^2t is found by multiplying by correction factor, K, given as a function of applied working voltage, E_g , (rms).



► Power Losses

Watts loss at rated current is given in the electrical characteristics. The curve allows the calculation of the power losses at load currents lower than the rated current. The correction factor, K_p , is given as a function of the RMS load current, I_b , in %



Prepared by : Colin

Date of Publication : 15.08.2021

Approved by : Jacky

Revision

:V0

Square Body Flush End Contact Size 03

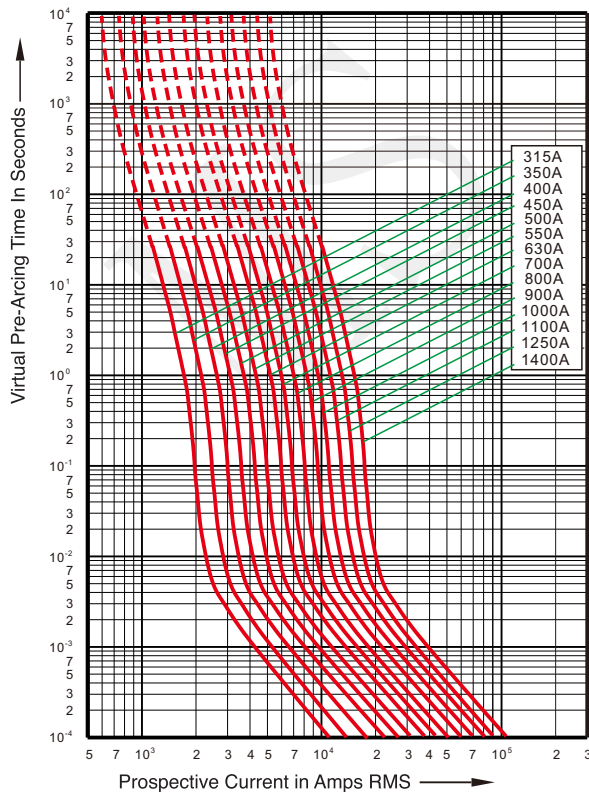
1000V(IEC) 315A-1400A

► Catalog Numbers

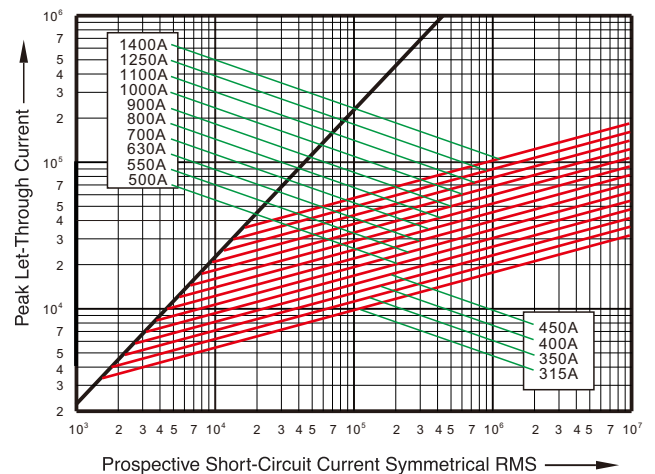
Catalog Numbers	Size	Rated Voltage (V)	Rated Current (A)	I^2t ($10^3 A^2s$)		Watts Loss (W)
				Pre-arc	Operating	
HM01F136U	F3F1082KUMS	1000	315	12.42	70.58	≤ 90
HM02F136U	F3F1082KUMS	1000	350	17.05	96.65	≤ 95
HM03F136U	F3F1082KUMS	1000	400	22.45	135.5	≤ 100
HM04F136U	F3F1082KUMS	1000	450	30.85	183.6	≤ 105
HM05F136U	F3F1082KUMS	1000	500	41.85	258.18	≤ 110
HM06F136U	F3F1082KUMS	1000	550	59.67	355.75	≤ 115
HM07F136U	F3F1082KUMS	1000	630	90.75	539	≤ 125
HM08F136U	F3F1082KUMS	1000	700	126	770.5	≤ 130
HM09F136U	F3F1082KUMS	1000	800	187.5	1155.5	≤ 140
HM10F136U	F3F1082KUMS	1000	900	275.5	1675	≤ 145
HM11F136U	F3F1082KUMS	1000	1000	375.5	2255.6	≤ 150
HM12F136U	F3F1082KUMS	1000	1100	495.85	3025.5	≤ 160
HM13F136U*	F3F1091KUMS	1000	1250	632.75	3740	≤ 180
HM14F136U*	F3F1091KUMS	900	1400	810	4940	≤ 195

*Overall length is 91.4mm, for all other fuses the overall length is 82.4mm

► Time-Current Curve



► Peak Let-Through Curve



Prepared by : Colin

Date of Publication : 15.08.2021

Approved by : Jacky

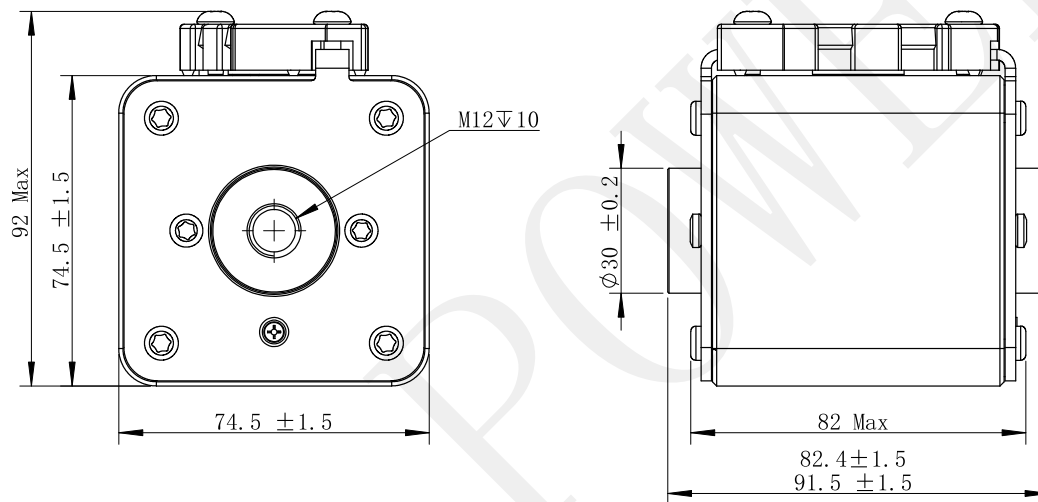
Revision : V0

Square Body Flush End Contact Size 03

1000V(IEC) 315A-1400A

► Outline

Dimensions(mm) 1mm=0.0394"/1"-25.4mm



*Overall length is 91.4mm, for all other fuses the overall length is 82.4mm

► MS Power GmbH

Mergenthalerallee 79-81
65760 Eschborn, Germany
Web: www.mspowergroup.com
Mail: info@mspowergroup.de

Sales & Enquiry:

sales@mspowergroup.de

Technical Support:

solution@mspowergroup.de

After sales Service:

service@mspowergroup.de

Phone: +49 (0) 6196/7768 666

Fax: +49 (0) 6196/7757 888



Prepared by : Colin	Date of Publication : 15.08.2021
Approved by : Jacky	Revision :V0

Square Body Flush End Contact Size 03

1000V(IEC) 315A-1400A

► Terms & Conditions of usage :

The data contained in this product datasheet is exclusively Intended for technically trained staff. You and your technical departments will have to evaluate the suitability of the product for the intended application and the completeness of the product data with respect to such application. This product datasheet is describing the characteristics of this product for which a warranty is granted. Any such warranty is granted exclusively pursuant the terms and conditions of the supply agreement. There will be no guarantee of any kind for the product and its characteristics. The information in the valid application-and assembly notes of the device must be considered.

Should you require product information in excess of the data given in this product datasheet or which concerns the specific application of our product, please contact the sales office, which is responsible for you (see www.mspowergroup.com). For those that are specifically interested we may provide application notes.

Due to technical requirements our product may contain dangerous substances. For information on the types in question please contact the sales office, which is responsible for you.

Should you intend to use the Product in aviation applications, in health or live endangering or life support applications, please notify. Please note, that for any such applications we urgently recommend

- to perform joint Risk and Quality Assessments;
- the conclusion of Quality Agreements;
- to establish joint measures of an ongoing product survey, and that we may make delivery depended on the realization of any such measures.

If and to the extent necessary, please forward equivalent notices to your customers.

Changes of this product datasheet are reserved.

Prepared by : Colin	Date of Publication : 15.08.2021
Approved by : Jacky	Revision : V0