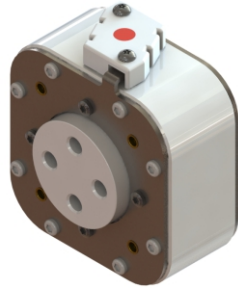


## Square Body Flush End Contact Size 04

690V(IEC) 1000A-4000A

### ▶ Product picture



### ▶ Specifications

**Description:** Square body DIN 43 620 blade style high speed fuses.

#### ▶ Ratings:

Rated Volts: —690V a.c.(IEC)  
 Rated Amps: —1000A-4000A  
 Breaking Capacity: —200kA RMS Sym

**Agency Information:** CE, Designed and tested to IEC 60269: Part 4, UL Recognized.

### ▶ Features and Benefits

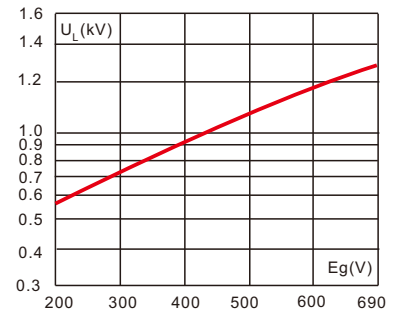
- Excellent Current Limiting
- Low arc voltage and low energy let-through( $I^2t$ )
- Low watts loss
- Superior Cycling Ability

### ▶ Typical Applications

- Power converters/rectifiers
- Reduced voltage starters

### ▶ Arc Voltage

This curve gives the peak arc voltage,  $U_L$ , which may appear across the fuse during its operation as a function of the applied working voltage  $E_g$ , (rms) at a power factor of 15%.

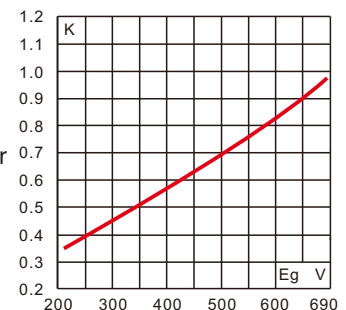


### ▶ Electrical

Characteristics

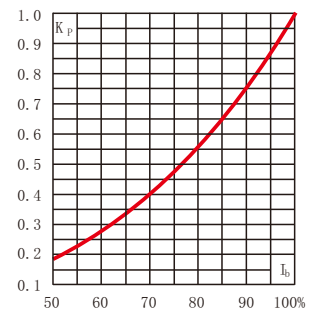
Total clearing  $I^2t$

The total clearing  $I^2t$  at rated voltage and at power factor of 15% are given in the electrical characteristics. For other voltages, the clearing  $I^2t$  is found by multiplying by correction factor,  $K$ , given as a function of applied working voltage,  $E_g$ , (rms).



### ▶ Power Losses

Watts loss at rated current is given in the electrical characteristics. The curve allows the calculation of the power losses at load currents lower than the rated current. The correction factor,  $K_p$ , is given as a function of the RMS load current,  $I_b$ , in %



Prepared by : Colin	Date of Publication : 13.05. 2021
Approved by : Jacky	Revision : V0

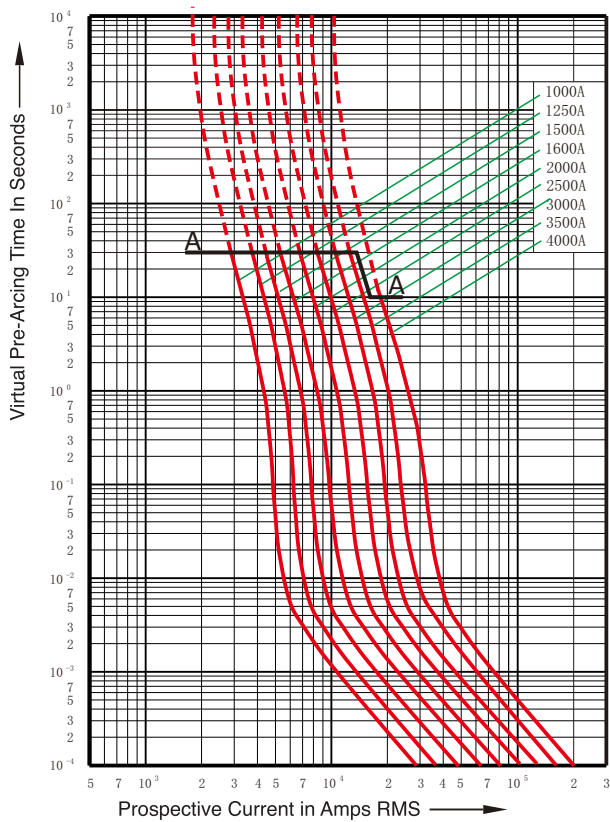
## Square Body Flush End Contact Size 04

690V(IEC) 1000A-4000A

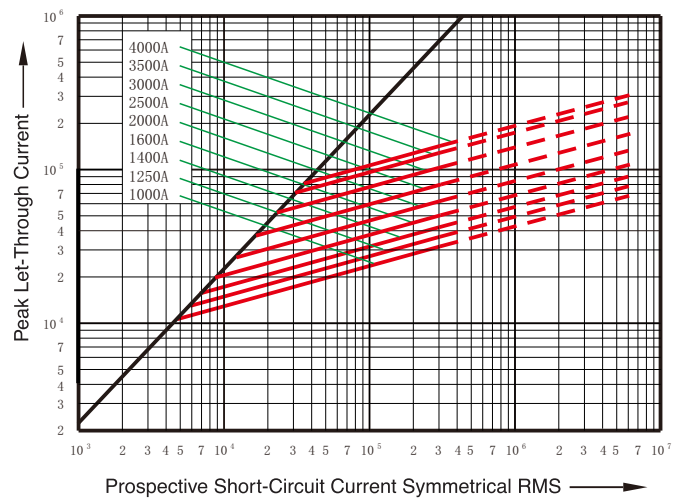
### ► Catalog Numbers

Catalog Numbers	Size	Rated Voltage (V)	Rated Current (A)	$I^2t(10^3A^2s)$		watts Loss (W)
				Pre-arc	Operating	
HF01F442U	D4F4067KUMS	690	1000	72	450	≤ 170
HF02F442U	D4F4067KUMS	690	1250	137	920	≤ 190
HF03F442U	D4F4067KUMS	690	1400	196	1350	≤ 200
HF04F442U	D4F4067KUMS	690	1600	293	1970	≤ 220
HF05F442U	D4F4067KUMS	690	2000	588	3890	≤ 250
HF06F442U	D4F4067KUMS	690	2500	1260	8200	≤ 290
HF07F442U	D4F4067KUMS	690	3000	2100	14400	≤ 310
HF08F442U	D4F4067KUMS	690	3500	3460	23700	≤ 340
HF09F442U	D4F4067KUMS	500	4000	5150	30200	≤ 360

### ► Time-Current Curve



### ► Peak Let-Through Curve



Prepared by : Colin

Date of Publication : 13.05. 2021

Approved by : Jacky

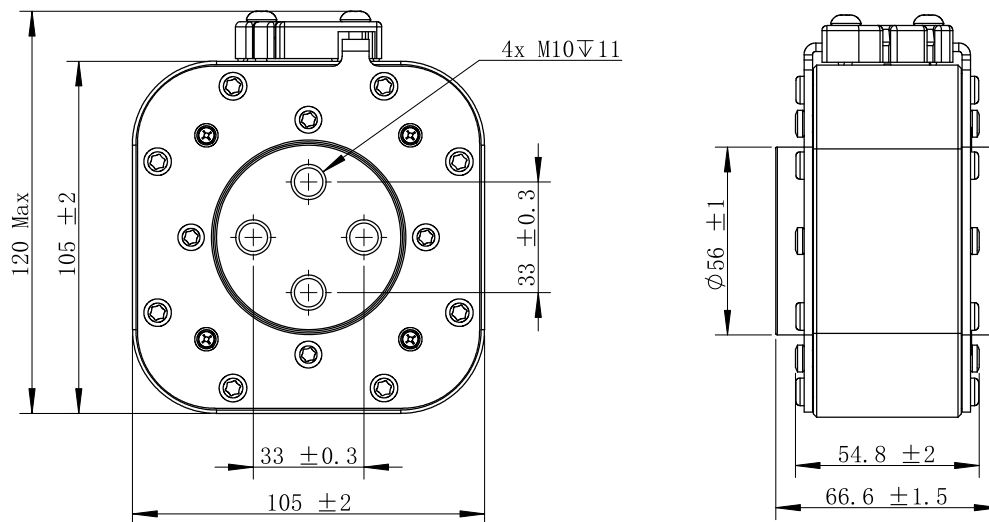
Revision : V0

## Square Body Flush End Contact Size 04

690V(IEC) 1000A-4000A

### ► Outline

Dimensions(mm) 1mm=0.0394"/1"=25.4mm



### ► MS Power GmbH

Mergenthalerallee 79-81  
65760 Eschborn, Germany  
Web: [www.mspowergroup.com](http://www.mspowergroup.com)  
Mail: [info@mspowergroup.de](mailto:info@mspowergroup.de)

#### Sales & Enquiry:

[sales@mspowergroup.de](mailto:sales@mspowergroup.de)

#### Technical Support:

[solution@mspowergroup.de](mailto:solution@mspowergroup.de)

#### After sales Service:

[service@mspowergroup.de](mailto:service@mspowergroup.de)

Phone: +49 (0) 6196/7768 666

Fax: +49 (0) 6196/7757 888



Prepared by : Colin	Date of Publication : 13.05. 2021
Approved by : Jacky	Revision : V0

**Square Body Flush End Contact Size 04**

690V(IEC) 1000A-4000A

**► Terms & Conditions of usage :**

The data contained in this product datasheet is exclusively Intended for technically trained staff. You and your technical departments will have to evaluate the suitability of the product for the intended application and the completeness of the product data with respect to such application. This product datasheet is describing the characteristics of this product for which a warranty is granted. Any such warranty is granted exclusively pursuant the terms and conditions of the supply agreement. There will be no guarantee of any kind for the product and its characteristics. The information in the valid application-and assembly notes of the device must be considered.

Should you require product information in excess of the data given in this product datasheet or which concerns the specific application of our product, please contact the sales office, which is responsible for you (see [www.mspowergroup.com](http://www.mspowergroup.com)). For those that are specifically interested we may provide application notes.

Due to technical requirements our product may contain dangerous substances. For information on the types in question please contact the sales office, which is responsible for you.

Should you intend to use the Product in aviation applications, in health or live endangering or life support applications, please notify. Please note, that for any such applications we urgently recommend

- to perform joint Risk and Quality Assessments;
- the conclusion of Quality Agreements;
- to establish joint measures of an ongoing product survey, and that we may make delivery depended on the realization of any such measures.

If and to the extent necessary, please forward equivalent notices to your customers.

Changes of this product datasheet are reserved.

Prepared by : Colin	Date of Publication : 13.05.2021
Approved by : Jacky	Revision : V0